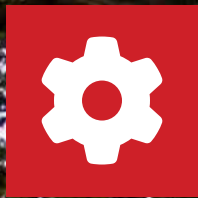


Link-Belt
EXCAVATORS

260 X4S

BROCHURE



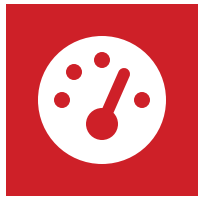


BUILT FOR OPERATORS

Developed from the solid foundation of our award-winning X4 Series, the 260 X4S is purpose-built with modern technologies for various operating applications. The 260 X4S fits the expanding demands of dynamic contractors thanks to its stability, control, and strength in digging power. It is perfect for road building and maintenance, excavation, site preparation, construction, sewage work, or demolition operations.







NEXT LEVEL STRENGTH



TOUGH ON DIRT, EASY ON FUEL

The 260 X4S delivers exceptional performance without sacrificing fuel savings. Its Isuzu AQ-4HK1X Final Tier 4 Certified engine achieves up to 5% better fuel economy in SP mode with superior cycle times. Convenient fuel monitoring is at your fingertips.



OPERATOR WORK MODES

Stay in control of fuel economy, productivity, and power depending on the task at hand.

Lifting - Lower engine speed for fine control

Eco - Lower fuel consumption

Power - Normal power mode

Speed Priority - For increased productivity

PERFORMANCE BOOST

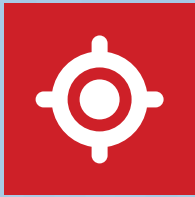
We understand your work is essential, and we want to help you get it done right, the first time. We engineer reliability and performance into every piece of equipment, offering advanced lifting performance, pressure relief with constant boost function, preset flow rate and pressure for up to 10 attachments. With optimized pump control and engine speed, you've got unparalleled digging force and working range.



ROBUST POWER

Our exclusive flow control system starts with more digging power, increased lift capacities and rapid cycle times. Kawasaki electronically controlled pumps guarantee hydraulic flow is delivered precisely when and where it's needed. The result is more maneuverability and precision, smoother machine operation and improved fuel efficiency across all operating modes.





PRECISION GRADE

Precision Grade puts operators in the driver's seat for faster, more accurate work. IMU sensors on the machine's arm, bucket, and frame give them a real-time view of the bucket's position compared to the target grade on their in-cab display.



GETS JOBS DONE FASTER

Improve digging and grading accuracy with fewer passes. Save time and money by moving materials right the first time. Reduce time and costs associated with grade staking and checking.

GRADE CONTROL BENEFITS

Improve job site safety by keeping people off the ground and out of trenches.





**CLEVER
CUSTOMIZATION**



CUSTOM FLOW

The 260 X4S offers exceptional convenience and operability, integrating throttle volume and frequently used modes into a single panel. Our tailored machine function switches ensure seamless operation for digging and loading tasks. This machine provides customizable operability with four distinct work modes—lifting, eco, power, and speed priority—allowing you to prioritize flow and machine functionality from the comfort of your seat, no matter the job.

CUSTOM ATTACHMENT SETTINGS

Store and name up to 10 distinct attachment settings, customizing the flow rate and pressure you need to get the job done. With tailored attachment operations, lost time and overworking are a thing of the past.



OFFICE WITH A VIEW

The 260 X4S features one of the most spacious, technologically equipped cabs in its class. Joystick functionality and 4 power modes provide quick customization for the work at hand. Controls are always close with the armrests and joystick conveniently built into the seat height adjustment.



COMFORTS OF HOME

To reduce fatigue during long jobs, the 260 X4S features an ergonomic footrest, air suspension, heat, tilt functions, a two-step incline, and optimized foot pedal height. Four styles of superior lumbar back support ensure maximum comfort, while adjustable armrests and a recline feature up to 155 degrees provide added relaxation during breaks.

RELY ON RED

Advances in design deliver the best in comfort and safety during operation. The 260 X4S is manufactured with built-in safety features, the WAVES system, vertical wide monitor for better visibility, auto operation lever lock function.

• **MONITOR AND MOVE**

The 260 X4S comes equipped with a 10" HD LCD color monitor, allowing for customizable functions and increased visibility as the WAVES system provides a seamless 270° view around your machine. Check detailed fuel information and enable shortcuts for frequently used items, such as machine information, idle mode, auxiliary hydraulics, flow balance and more.

• **WAVES+**

Upgrade jobsite safety with WAVES+. Alerts notify the operator on screen and with an audible sound when movement is detected within the 270° field of view.

• **SAFETY**

The auto lever lock safety function prevents accidents due to unexpected operation of joystick, proportional switch, travel lever and pedal. Additional safety features include firewall, ISO-compliant guardrails, seat belt alarm, LED work lights, neutral safety start, and gate lock safety shutoff.



CUSTOMER SUPPORT JUST A CALL AWAY

Owning a Link-Belt excavator is just the beginning. A network of dedicated Link-Belt Excavator dealers stretches across the U.S. and Canada, all ready to provide you with the exceptional service you deserve. You can expect fast, dependable service whenever needed, backed by 24/7 access to parts.

No matter your location or project requirements, there's a Link-Belt dealer nearby to keep your machine running smoothly. Their expertise extends beyond just sales; they can also provide comprehensive maintenance plans, operator training, and financing options to fit your needs.





OPTIMIZED FUEL DELIVERY

Experience extreme force and unmatched efficiency with the Isuzu AQ-4HK1X. This Tier 4 Certified workhorse delivers robust horsepower and torque, tackling the toughest jobs effortlessly. But don't let the brute strength fool you – it's engineered for fuel efficiency with a low-maintenance after-treatment system, maximizing your bottom line and reducing downtime.





SUPPORT YOU CAN TRUST

With the purchase of a 260 X4S, you'll get expert service and support with real people. Our Customer Support staff are knowledgeable and happy to assist you with parts, service, and warranty questions.



LINK-BELT PARTS

Your Link-Belt Excavators dealer has a wide range of genuine Link-Belt parts in stock. For anything not on the shelf, our dealers have access to the Link-Belt parts depot - available for lookup online.

GROUND-LEVEL MAINTENANCE

All fuel, pilot and oil filters are in one convenient location, including a maintenance-free fuel final filter and ground level hydraulic oil sampling valve, making up keep a cinch.





HASSLE-FREE CARE

Access the radiator compartment and sample or refill hydraulic oil without the need for any tools and relieve pressure from the hydraulic tank via a handy breather cap. Whenever the cab door is opened, machine hours are displayed for 30 seconds, providing useful information when and where you need it most.



WARRANTY

Our products are distinguished by a comprehensive warranty program and strict quality control. The quality and durability of the X4S are backed by a 5-year/5,000-hour full machine warranty. Additionally, our warranties are transferable, adding resale value to your equipment. Ask your local dealer about coverage options today.





REMOTE CARE



The 260 X4S comes standard with a new dual-band modem to improve communication and functionality with greater range and real-time data capabilities.

With 24-hour RemoteCARE®, you will always know your equipment's hours, location, performance, diagnostics, and security status. Proactively monitor, plan, and address preventative maintenance items, receive machine health notifications via email, and review average fuel consumption rates for your machine right from your smartphone. Advanced security features like Geofencing, curfew settings, and theft tracking are standard with RemoteCARE®.



MINIMIZE DOWNTIME

From minor troubles caused by incorrect machine settings to advanced problem solving, we expand the range of remote support, shorten the lead time for troubleshooting, and reduce costs by moving people to and reduce costs by minimizing the need for on-site personnel.

NO SUBSCRIPTION FEES

RemoteCARE® is available with no subscription fees to the original owner and is transferable.



Scan QR code to
download RemoteCARE
app for mobile.

260 X4S SPECIFICATIONS

SAE Net Horsepower

177 hp (132.1 kW)

Operating Weight

57,300 lbs (26,000 kg)

Swing Torque

55,300 lbf-ft (74.9 kNm)



ENGINE

Isuzu AQ-4HK1X Final Tier 4 turbocharged diesel engine with electronic control (ECM) and high pressure common-rail fuel injection, 4-cylinder, water-cooled, Cooled Exhaust Gas Recirculation (EGR), Intercooler, Variable-Geometry Turbocharger (VGT), Diesel Oxidation Catalyst (DOC) and Selective Catalytic Reduction (SCR) system with Dosing Control Module and heated DEF lines and tank. Electronic fuel pump and priming, fuel cooler, auto-idle start, auto warm-up, EPF engine protection, dual-stage fuel filtration, remote oil filter, engine oil sample port, green plug oil drain, double element air filter.

Engine	Isuzu AQ-4HK1X Final Tier 4 turbocharged diesel engine
SAE J 1349 net horsepower	177 HP (132.1 kW) @ 2000 min-1 (rpm)
Displacement	317 cu in (5.2 L)
Maximum Torque	458 lbf-ft (621 N-m) @ 1800 min-1 (rpm)
Starter	24 V - 5.0 kW
Alternator	85 amp
Voltage	24 V

CAB AND CONTROLS

ROPS and FOPS Level 1 certified with automatic climate control A/C and heat with defroster, 10" LCD Hi-Definition color monitor with customizable shortcut switches featuring a full time rear view camera display and left and right view camera, fuel efficiency gauge, custom flow control, joysticks are pre-wired for auxiliary hydraulics, knob switch customization, dual LED cab lights with programmable delay turn off, safety glass windows, sunroof with sunshade, shockless cab suspension with four fluid cab mounts, SCM High-Back reclining air-suspension seat with heat & tilt, sliding 4-position tilting control consoles, Bluetooth technology, AM/FM sound system with USB and MP3 auxiliary input jack, digital clock, dome light, seat belt, coat hook, 2 cup holders, storage compartments, floor mat, footrests, smart phone tray, 24V socket, 12V outlet, travel alarm, handrails, mirrors, side-entry cab filter, spare parts kit.

Four selectable work modes (SP, Power, Eco, & Lift), RemoteCARE telematics GPS system, anti-theft password protection system, onboard self-diagnostic system with memory and service interval reminders, auto idling system, one-touch decelerator, auto-idle engine shutdown, neutral safety start, gate-lock safety shutoff, top guard OPG level 1 in cab structure.

260 X4S SPECIFICATIONS

HYDRAULIC SYSTEM

Open-center system, (2) electronically controlled variable displacement axial piston pumps, (1) gear pump for pilot controls. Main control valve with one 4-spool valve and one 5-spool valve with auxiliary spool. Internal anti-drift valves for boom and arm, oil cooler, high performance 6-micron full flow return filter, 8-micron pilot filter, firewall and hydraulic free swing.

Hydraulic Pumps

Pump Output	2 x 61.8 gpm (234 L/min)
Pilot Pump Maximum Flow	5.3 gpm (20 L/min)

Relief Valve Settings

Boom Up / Arm / Bucket in Power Boost	4,970 psi (34.3 MPa) 5,410 psi (37.3 MPa)
Swing Circuit	4,190 psi (28.9 MPa)
Travel Circuit	4,970 psi (34.3 MPa)

Hydraulic Cylinders

Number of Cylinders - Bore x Stroke

Boom	2 - 5.1" x 52.6" (130 mm x 1335 mm)
Arm	5.7" x 65.4" (145 mm x 1660 mm)
Bucket	5.1" x 42.1" (130 mm x 1070 mm)

SWING

Planetary reduction powered by axial-piston motor, internal ring gear with grease cavity for swing pinion, swing bearing is single-row, shear type ball bearing, mechanical disc swing brake, auto-power swing.

Swing Speed	10.6 rpm
Tail Swing	9'10" (2.99 m)
Swing Torque	55,300 lbf-ft (74.9 kNm)

UNDERCARRIAGE

15'3" (4.65 m) undercarriage by 8'6" (2.59 m) track gauge, sealed and strutted track chain with double track guide, sealed rollers and idlers, disc type brakes, adjustable track tension, swivel guard.

Carrier Rollers	2 per Side
Track Rollers	9 per Side
Track Link Pitch	7.5" (190 mm)
Shoes	51 per Side
Shoe Width	31.5" (800 mm)
Ground Pressure	5.7 psi (0.039 MPa)

260 X4S SPECIFICATIONS

TRAVEL SYSTEM

Two-speed independent hydraulic travel with compact axial-piston motors, hydraulic motor powered output shaft coupled to a planetary reduction drive and track sprocket, all hydraulic components mounted within the width of side frame, automatic downshift for high torque to overcome obstacles, spring-applied hydraulic release parking brake built into each motor, travel motors equipped with counterbalance valve to prevent over-speeding down an incline, single-pedal straight line travel.

Travel Speeds	2.2 - 3.4 mph (3.5 - 5.5 km/h)
Drawbar Pull	45,000 lbf (200 kN)
Gradeability	70% (35°)

ATTACHMENT

HD Boom	19' 2" (5.85 m)
Available Arms	Digging Force
9' 10" (3.00 m)	26,980 lbf (120.0 kN)
with Auto Power Boost	29,230 lbf (130.0 kN)
8' 2" (2.50 m)	31,700 lbf (141.0 kN)
with Auto Power Boost	34,400 lbf (153.0 kN)
11' 6" (3.52 m)	24,050 lbf (107.0 kN)
with Auto Power Boost	26,080 lbf (116.0 kN)
Bucket Digging Force	36,420 lbf (162.0 kN)
with Auto Power Boost	39,570 lbf (176.0 kN)

LUBRICANT AND COOLANT CAPACITY

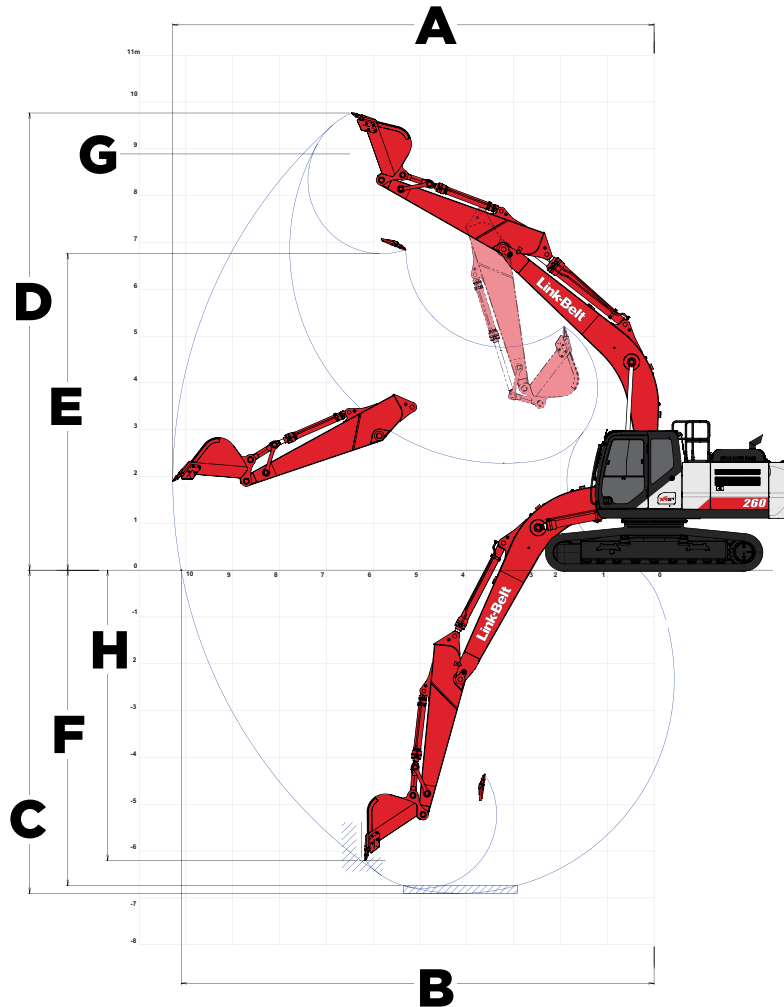
Fuel Tank	108 Gallons (410 Liters)
Hydraulic System	76.6 Gallons (290 Liters)
Hydraulic Tank	42 Gallons (162 Liters)
Final Drive (per side)	1.2 Gallons (4.5 Liters)
Swing Drive	2.5 Gallons (9.6 Liters)
Engine Oil	6.1 Gallons (23.1 Liters)
DEF Tank	22 Gallons (84 Liters)
Coolant System	8.5 Gallons (32.3 Liters)

OPERATING WEIGHT

Working weight with 31.5" (800 mm) shoes, 19' 2" (5.85 m) boom, 9' 10" (3.00 m) arm, 1,940 lbs (880 kg) bucket, 11,100 lbs (5,050 kg) counterweight	57,300 lbs (26,000 kg)
--	------------------------

260 X4S SPECIFICATIONS

WORKING RANGE

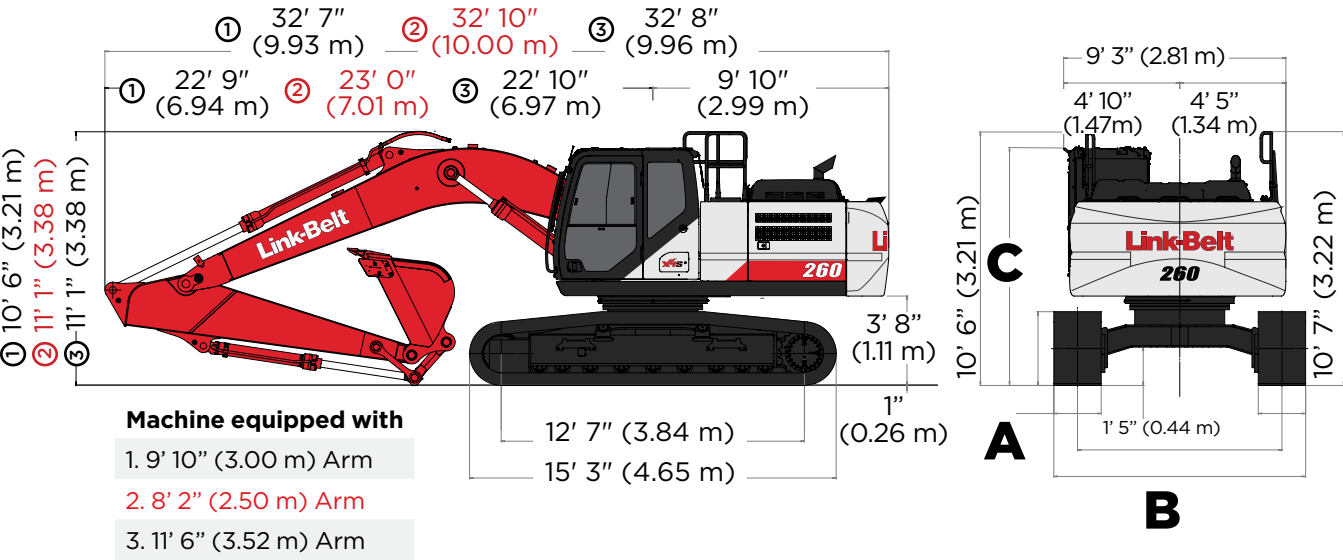


Machine Equipped with 19' 2" (5.85 m) Boom

	Arm 9' 10" (3.00 m)	Arm 8' 2" (2.50 m)	Arm 11' 6" (3.52 m)
A. Maximum reach	33' 9" (10.28 m)	32' 3" (9.82 m)	35' 5" (10.79 m)
B. Maximum reach @ ground level	33' 2" (10.10 m)	31' 7" (9.63 m)	34' 10" (10.62 m)
C. Maximum dig depth	22' 8" (6.9 m)	21' 0" (6.40 m)	24' 4" (7.42 m)
D. Maximum dig height	32' 0" (9.76 m)	31' 4" (9.56 m)	33' 0" (10.07 m)
E. Maximum dump height	22' 2" (6.76 m)	21' 6" (6.55 m)	23' 10" (7.06 m)
F. Digging depth 8' (2.44 m) level bottom	22' 1" (6.74 m)	20' 4" (6.21 m)	23' 10" (7.27 m)
G. Bucket rotation	175°	175°	175°
H. Maximum vertical wall depth	20' 2" (6.14 m)	18' 8" (5.70 m)	21' 11" (6.68 m)

260 X4S SPECIFICATIONS

TRAVEL DIMENSIONS





Undercarriage	STD	OPTION		Cab Specification	C: Cab Height
A. Shoe Width	31.5" (800 mm)	23.6" (600 mm)	27.5" (700 mm)	STD. (No Equipment)	9' 11" (3.02 m)
B. Overall Width	11' 2" (3.39 m)	10' 6" (3.19 m)	10' 10" (3.29 m)	With Head Guard	10' 3" (3.13 m)
				With Vandal Cover	10' 3" (3.13 m)
				With Head Guard & Vandal Cover	10' 6" (3.21 m)





260 X4S SPECIFICATIONS

LIFT CAPACITIES - RADIUS OF LOAD*

9' 10" (3.00 M) ARM WITH 19' 2" (5.85 M) BOOM WITH POWER-BOOST APPLIED

		5' 0" (1.5 m)		10' 0" (3.0 m)		15' 0" (4.5 m)		20' 0" (6.0 m)		25' 0" (7.5 m)		30' 0" (9.0 m)		Cap at Max. Reach	
		End	Side	End	Side	End	Side	End	Side	End	Side	End	Side	End	Side
+25' 0"	lbs													10,100*	10,100*
(7.5 m)	kgs													4580*	4580*
+20' 0"	lbs													9,350*	9,350*
(6.0 m)	kg													4,240*	4,240*
+15' 0"	lbs							15,800*	15,300	14,750*	10,800			9,150*	9,150*
(4.5 m)	kg							7,165*	6,935	6,690*	4,895			4,150*	4,150*
+10' 0"	lbs					23,250*	22,300	18,150*	14,600	15,200	10,450			9,300*	8,650
(3.0 m)	kg					10,545*	10,115	8,230*	6,620	6,890	4,740			4,215*	3,920
+5' 0"	lbs					27,900*	20,850	20,550*	13,900	14,850	10,150			9,850*	8,350
(1.5 m)	kg					12,655*	9,455	9,320*	6,300	6,735	4,600			44,658	3,785
Ground	lbs			15,600*	15,600*	30,350*	20,100	20,250	13,400	14,550	9,850			10,750*	8,500
Line	kg			7,075*	7,075*	13,765*	9,115	9,185	6,075	6,595	4,465			4,875*	3,855
-5' 0"	lbs	16,900*	16,900*	27,900*	27,900*	30,500*	19,850	20,000	13,200	14,450	9,800			12,500*	9,200
(1.5 m)	kg	7,665*	7,665*	12,655*	12,655*	13,830*	9,000	9,070	5,985	6,550	4,445			5,665*	4,170
-10' 0"	lbs	29,900*	29,900*	40,050*	39,550	28,450*	20,000	20,100	13,250					15,950*	10,800
(3.0 m)	kg	13,560*	13,560*	18,165*	17,935	12,900*	9,070	9,115	6,010					7,230*	4,895
-15' 0"	lbs			31,900*	31,900*	23,050*	20,550							16,950*	14,850
(4.5 m)	kg			14,465*	14,465*	10,455*	9,320							7,685*	6,735

8' 2" (2.50 M) ARM WITH 19' 2" (5.85 M) BOOM WITH POWER-BOOST APPLIED

		5' 0" (1.5 m)		10' 0" (3.0 m)		15' 0" (4.5 m)		20' 0" (6.0 m)		25' 0" (7.5 m)		30' 0" (9.0 m)		Cap at Max. Reach	
		End	Side	End	Side	End	Side	End	Side	End	Side	End	Side	End	Side
+25' 0"	lbs													14,750*	14,750*
(7.5 m)	kgs													6,690*	6,690*
+20' 0"	lbs							15,600*	15,500					13,500*	12,100
(6.0 m)	kg							7,075*	7,030					6,120*	5,485
+15' 0"	lbs					20,000*	20,000*	16,950*	15,050	15,400	10,600			13,150*	10,200
(4.5 m)	kg					9,070	9,070	7,685*	6,825	6,985	4,805			5,960*	4,625
+10' 0"	lbs					25,050*	21,850	19,150*	14,400	15,100	10,350			13,350*	9,300
(3.0 m)	kg					11,360	9,910	8,685*	6,530	6,845	4,690			6,055*	4,215
+5' 0"	lbs					29,150*	20,550	20,650	13,750	14,800	10,100			13,200	9,000
(1.5 m)	kg					13,220	9,320	9,365	6,235	6,710	4,580			5,985	4,080
Ground	lbs					30,700*	20,000	20,200	13,350	14,550	9,900			13,550	9,250
Line	kg					13,925	9,070	9,160	6,055	6,595	4,490			6,145	4,195
-5' 0"	lbs			28,500*	28,500*	30,050*	19,900	20,050	13,250					14,950	10,100
(1.5 m)	kg			12,925*	12,925*	13,630	9,025	9,090	6,010					6,780	4,580
-10' 0"	lbs			37,050*	37,050*	27,150*	20,200	20,100*	13,450					17,800*	12,250
(3.0 m)	kg			16,805*	16,805*	12,315	9,160	9,115*	6,100					8,070*	5,555
-15' 0"	lbs			27,350*	27,350*	19,750*	19,750*							17,000*	17,000*
(4.5 m)	kg			12,405*	12,405*	8,955	8,955							7,710*	7,710*

260 X4S SPECIFICATIONS

LIFT CAPACITIES - RADIUS OF LOAD*

11' 6" (3.52 M) ARM WITH 19' 2" (5.85 M) BOOM WITH POWER-BOOST APPLIED

		5' 0" (1.5 m)		10' 0" (3.0 m)		15' 0" (4.5 m)		20' 0" (6.0 m)		25' 0" (7.5 m)		30' 0" (9.0 m)		Cap at Max. Reach	
End	Side	End	Side	End	Side	End	Side	End	Side	End	Side	End	Side	End	Side
+25' 0"	lbs													8,050*	8,050*
(7.5 m)	kgs													3650*	3650*
+20' 0"	lbs									11,950*	11,050			7,500*	7,500*
(6.0 m)	kg									5,420*	5,010			3,400*	3,400*
+15' 0"	lbs							14,450*	14,450*	13,600*	10,850			7,350*	7,350*
(4.5 m)	kg							6,550*	6,550*	6,165*	4,920			3,330*	3,330*
+10' 0"	lbs			32,450*	32,450*	21,200*	21,200*	16,900*	14,700	14,850*	10,500			7,450*	7,450*
(3.0 m)	kg			14,715*	14,715*	9,615*	9,615*	7,665*	6,665	6,735*	4,760			3,375*	3,375*
+5' 0"	lbs					26,300*	21,100	19,550*	13,950	14,850	10,100	8,900*	7,700	7,800*	7,600
(1.5 m)	kg					11,925*	9,570	8,865*	6,325	6,735	4,580	4,035*	3,490	3,535*	3,445
Ground	lbs			17,350*	17,350*	29,500*	20,100	20,200	13,350	14,500	9,800			8,450*	7,750
Line	kg			7,865*	7,865*	13,380*	9,115	9,160	6,055	6,575	4,445			3,830*	3,515
-5' 0"	lbs	15,400*	15,400*	26,000*	26,000*	30,450*	19,650	19,850	13,050	14,300	9,600			9,650*	8,250
(1.5 m)	kg	6,985*	6,985*	11,790*	11,790*	13,810*	8,910	9,000	5,915	6,485	4,350			4,375*	3,740
-10' 0"	lbs	25,650*	25,650*	39,000*	38,900	29,250*	19,700	19,850	13,000	14,400	9,700			11,800*	9,500
(3.0 m)	kg	11,630*	11,630*	17,690*	17,640	13,265*	8,935	9,000	5,895	6,530	4,395			5,350*	4,305
-15' 0"	lbs	38,950*	38,950*	35,550*	35,550*	25,250*	20,100	18,200*	13,350					16,100*	12,300
(4.5 m)	kg	17,665*	17,665*	16,125*	16,125*	11,450*	9,115	8,255*	6,055					7,300*	5,575

*NOTES: EXCAVATOR LIFTING CAPACITIES

- The lift capacities above are based on the ISO standard, ISO 10567:2007 - "Earthmoving Machinery - Hydraulic Excavators - Lift Capacity"
- Lifting capacities shown should not be exceeded. The weight of all lifting accessories must be deducted from the above lifting capacities. The use of a work tool attachment point as the lift point could affect the machine lift performance.
- Lifting capacities are based on the machine standing on a firm, uniform supporting surface. Users must make allowances for job conditions such as soft or uneven ground.
- Lifting capacities shown do not exceed 75% of the minimum tipping loads or 87% of the hydraulic capacities. Lifting capacities marked with an asterisk (*) are limited by hydraulic capacities.
- The least stable position is lifting over the side.
- Operators should be fully acquainted with the Operator's Manual & Operating Safety Booklet, furnished by LBX Company LLC before operating the machine.
- Lift capacities apply only to the machine as originally manufactured and normally equipped by LBX Company LLC.
- This lift chart is without bucket, bucket cylinder, and bucket linkage. If the machine is equipped with any of these components the weight of those components must be deducted from the listed lifting capacities.
- Weight of removed components: bucket cylinder 435.4 lbs (197.5 kg) and linkage 568.1 lbs (257.7 kg).

260 X4S SPECIFICATIONS

STANDARD EQUIPMENT

CAB

- 270° WAVES 3-Camera System
- 12V Power Outlet
- AM/FM Sound System
- Anti-Theft Device
- Auxiliary Switches on Control Lever
- Bluetooth
- Cab Air Filter - External
- Cab Handrails
- Cab Interior Light
- Cab ISO-Mounts
- LED Cab Lights
- Clear Roof Window
- Climate Control A/C and Heater
- Cup Holder (2)
- Defroster
- Digital Clock
- Emergency Exit and Hammer
- Face Vent
- Floor Mat (Split)
- Front Window One-Touch Lock
- Gate Lock Hydraulic Activation
- Horn
- Hour Meter (Digital)
- LCD 10" Color Monitor
- Maintenance Interval Reminders
- MP3 Auxiliary Input
- On-Board Diagnostic
- Radio Mute Switch
- Rear View Camera
- Rear View Mirrors (2)
- RemoteCARE Support System (GPS)
- Roof Sun Shade
- ROPS/FOPS Level 1 Certified Structure
- Safety Glass Windows
- SCM Air-Suspension Seat with Tilt & Heater
- Seat Recline
- Selectable Monitor Languages

- Side View Cameras (2)
- Small Storage
- Smart Phone Tray
- Travel Alarm with Cancel Switch
- Trip Meter (Digital)
- Wiper & Washer
- Wiper Switch on RH Joystick

ENGINE

- 80A Alternator
- Air Filter (Double Element)
- Air Filter Restriction Indicator
- Air Pre-Cleaner
- Auto Warm-Up System
- Auto-Idle
- Auto-Idle Shutdown
- Battery Disconnect Switch w/ LED Light
- Cooling Fan
- DEF Gauge on Monitor
- Diesel Oxidation Catalyst (DOC)
- Drain for Fuel Tank
- Dual Remote Fuel Filters with Water Separators
- EGR Coolers
- Emergency Engine Stop
- Engine Oil Sample Port
- Engine Protection Feature
- External Fuel Gauge
- External DEF Gauge
- Fan Belt Auto Tensioner
- Fan Housing
- Fuel Cooler
- Fuel Filter Restriction Indicator
- Fuel Management System
- Fuel Usage History
- Fuel Usage Monitor
- Glow Plug Pre-Heat
- Idle-Start
- Intercooler

- Neutral Start
- One-Touch Idle
- Radiator / Oil Cooler / Intercooler Protective Screens
- Remote Engine Oil Drain
- Remote Oil Filter
- Selective Catalytic Reduction (SCR)
- Variable Geometry Turbocharger

HYDRAULICS

- Anti-drift valves (Arm & Boom)
- Arm Regeneration
- Arm Speed Assistance (2 Pump Flow)
- Attachment Cushion Valve
- Auto Swing Priority
- Custom Flow Control
- Auxiliary Tool Settings (Custom Naming)
- Auxiliary Valve
- Boom Regeneration
- Boom Speed Assistance (2 Pump Flow)
- Bucket Curl Assist
- Control Levers Pre-Wired for Auxiliary Hyd.
- Pattern Control Valve (2 way)
- Electronically Controlled Hydraulic Pumps
- Fire Wall
- Free Swing
- Hydraulic Filter Restriction Indicator
- Hydraulic Oil Sample Port
- Long Life Hydraulic Oil (5,000 Hour)
- Neutral Pump De-Stroke
- Oil Cooler
- Power Boost
- Power Save

- Pressure Reading on Monitor
- Pump Stand-By Pressure

UNDERCARRIAGE

- 800 mm shoes (31.5 in) 3-Bar Steel
- Extended Steps
- Lashing Points (Tie-Downs)
- Sealed Link Chain
- Single Track Guide
- Strutted Track Chain
- Swivel Guard

UPPERSTRUCTURE

- Counterweight (11,100 lbs)
- Center Cover (Over Main CV)
- Fuel Tank Belly Pan
- ISO Guard Rails
- LED Tool Box Light
- Lockable Fuel Cap and Service Doors
- Lockable Hydraulic Oil Tank Cap
- Lockable Engine Hood
- Lockable Tool Box

ATTACHMENT

- 9' 10" (3.00 m) Arm
- 19' 2" (5.85 m) HD Boom Section
- Auxiliary Pipe Brackets
- Bucket Anti Clatter
- Chrome Pins
- HD Bucket Linkage
- LED Boom Light
- Quick Coupler Lines
- Precision Grade Brackets
- Teardrop Pin Retention Keepers

260 X4S SPECIFICATIONS

OPTIONAL EQUIPMENT

CAB

- 270° WAVES+ 3-Camera System
- Cab Sun Visor (Front)
- CAB Head Guard (FOPS Level 2)
- Front Guard (Mesh)
- Front Guard (BAR - OPG Level 1)
- Front Guard (BAR - OPG Level 2)
- LED Lights for WAVES Cameras (4)
- Rain Deflector
- Vandal Cover (Front Window)

PRECISION GRADE

- 2D Machine Control
- 2D Machine Guidance

ENGINE

- Reversible Cooling Fan
- Tropical Package

HYDRAULICS

- Hose Burst Check Valve

AUXILIARY HYDRAULIC OPTIONS

- Multi-Function Aux. w/ in-cab Pressure Settings and Proportional Joystick
- Combination Aux. w/ in-cab Pressure Settings and Proportional Joystick

UNDERCARRIAGE

- 600 mm shoes (23.6 in) 3-Bar Steel
- 700 mm shoes (27.5 in) 3-Bar Steel
- Triple Track Guards

ATTACHMENT

- 9' 10" (3.00 m) HD Arm
- 11' 7" (3.52 m) Arm
- 8' 2" (2.50 m) HD Arm

BUCKET SIZES



Scan the QR code to find the right size bucket, thumb, and coupler combination for the 260 X4S.

Or visit qrco.de/bdr07z





Link-Belt[®]

EXCAVATORS

LBX Company
lbxco.com

For more information
- including a digital
version of this brochure
- scan the QR code.



#LBX2518 · 8/24

LBX[®] and Link-Belt[®] are registered trademarks. Copyright 2024. All rights reserved. We are constantly improving our products and therefore reserve the right to change designs and specifications.